

Pink Luxury

Fame Cinemas, Forum Value Mall, Bengaluru

Highlight

Ceiling design with mirror finished circular rings interlocked in each other & pink LED lighting play a major role in achieving that grandness.

Credits

Location: Bengaluru, India

Drawings & Visualization: Prakash Gore & Amita Gore



Project Description

Soon after you climb up to mall escalator and reach the third level, an unusual slanting and eye-catching purple box-office counter sets the tone for the lavish interiors of Fame Cinemas a 5 screen multiplex located in Forum Value Mall at Whitefield, Bengaluru, India.

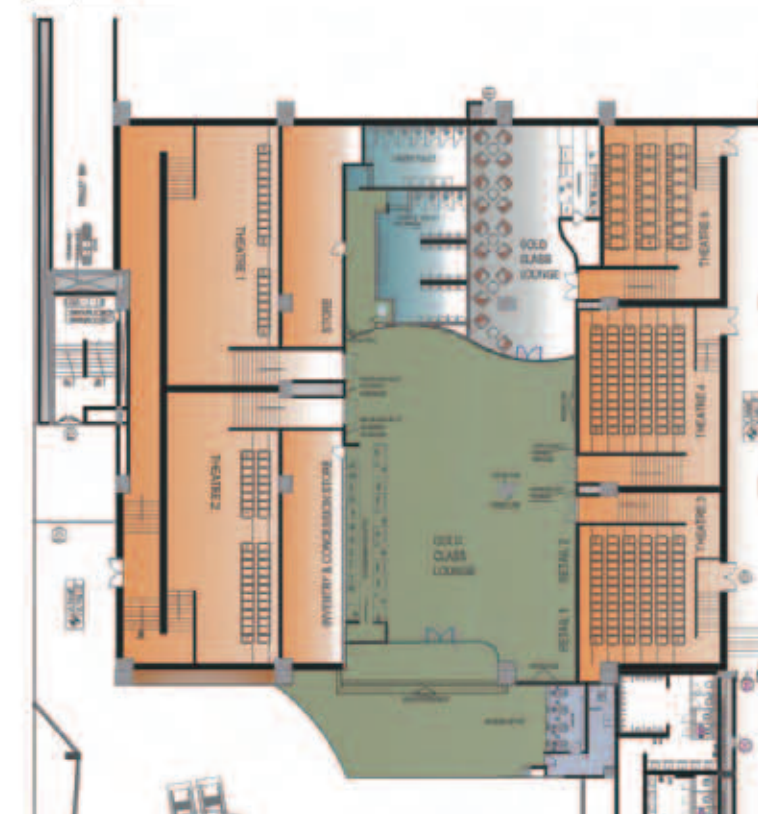
It spreads across a sprawling area of 2,323 m² with 790 m² of foyer and 5 auditoriums with seating capacity of 755 persons. Apart from four screens, it also has a Gold Class screen with a premier lounge area.

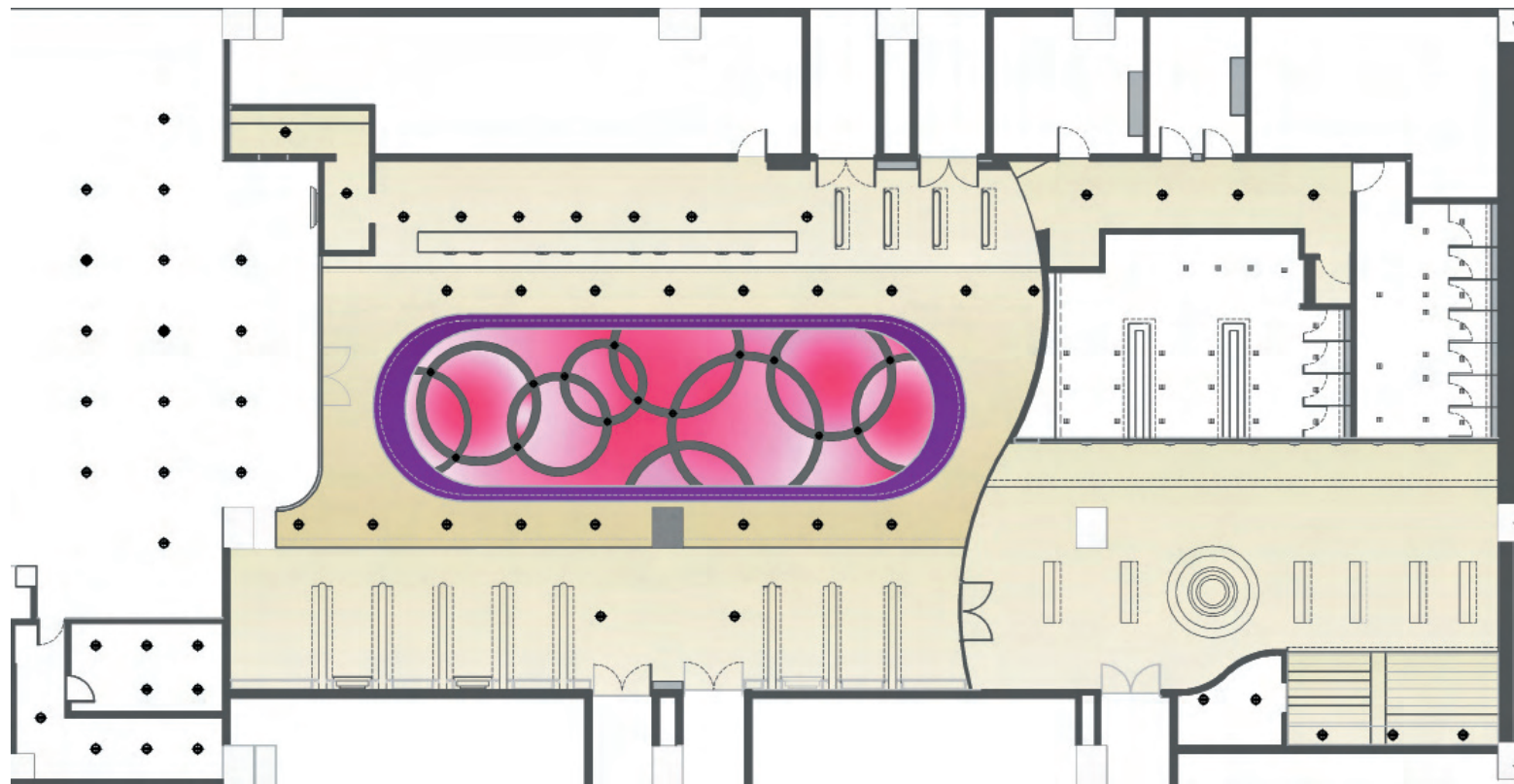
Foyer

Fluidity being the main concept in designing every feature in the foyer, be it a ceiling or wall or flooring, everything flows & blends into one another, resulting into a dramatic, contemporary space. Color scheme and lighting design plays main part of role in creating the whole scene. Our challenge in designing the foyer was to virtually transform the existing foyer space to a specious & grand space.

Ceiling design with mirror finished circular rings interlocked in each other & pink LED lighting in the ceiling above play major role in achieving that grandness. Mirror finish ring design gives the foyer virtual feel of double

Lobby level plan 1





height. This unique ceiling feature becomes main center of attraction of the multiplex foyer interior.

The free flowing curves inlay pattern in flooring mimics sea waves, also guides the patrons to cinema entrances. The laminas of the ceiling bend, flow on walls and finally transform into LCD display panels or a seating in alternate pattern.

The concession counter front fascia has rounded edges to add softness, purple brand color panels lit with diffused lights add to the ambience.

Auditoriums

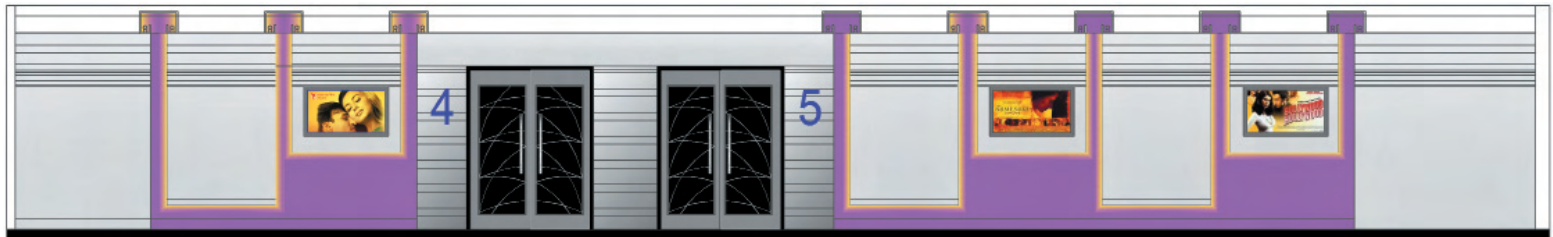
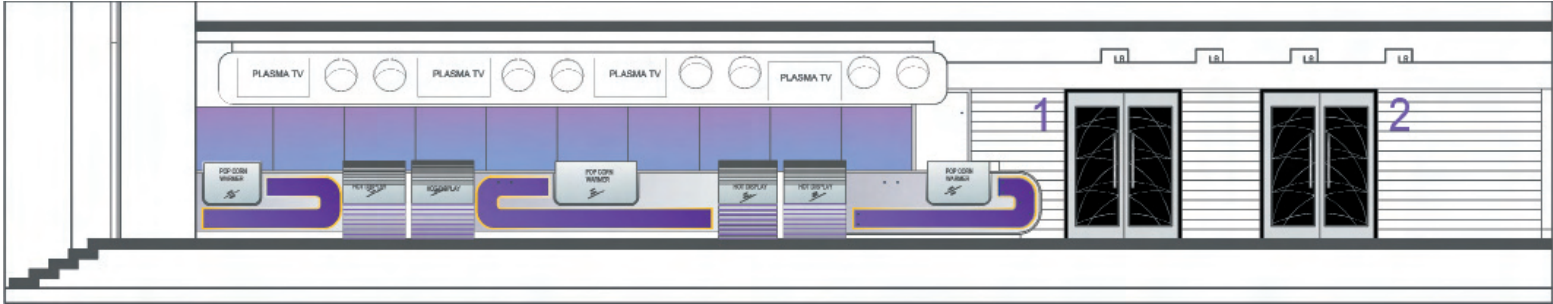
The walls of the auditorium have red, yellow, brown and black paneling with specially designed up lighter light fixture.

Gold Class Lounge

The ambience of Gold Class is very grand, elite & premium. The lounge has wooden flooring and walls have veneer panels with gold mirror finish laminate inlay strips. The crystal chandelier in the centre adds to the exclusivity. There are exclusive concession counters and washrooms for Gold Class patrons.

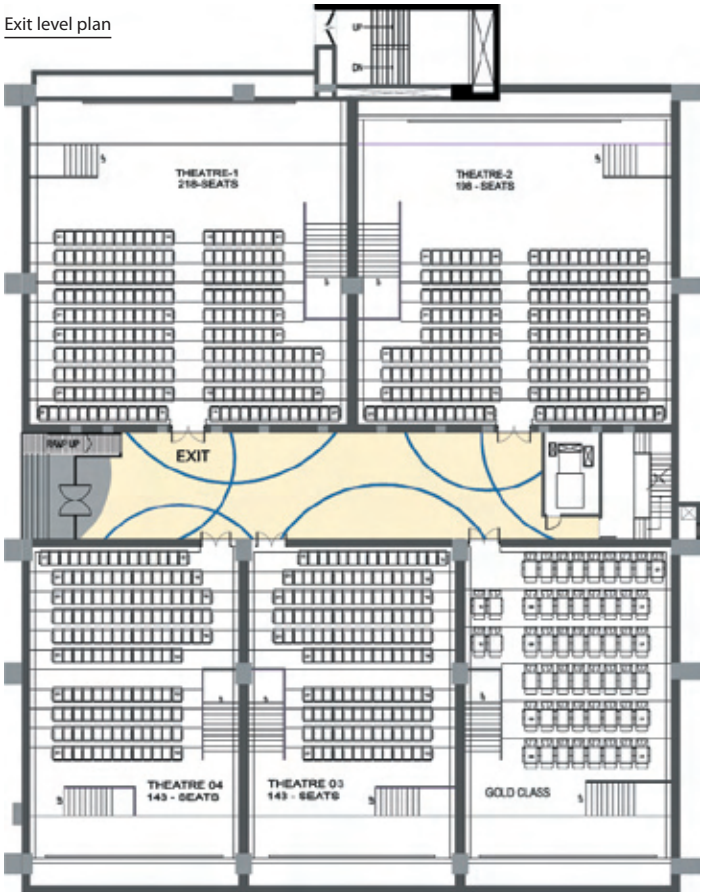
With indirect lighting maintained in the complete cinema hall, the walls of gold class cinema have gold duco painted vertical bands in combination with veneer finish columns. The Gold Class cinema has 53 seats with ultra comfort recliners that can stretch up to 150 degrees, enabling the patrons to indulge in an exclusive cinematic experience coupled with cozy comfort.





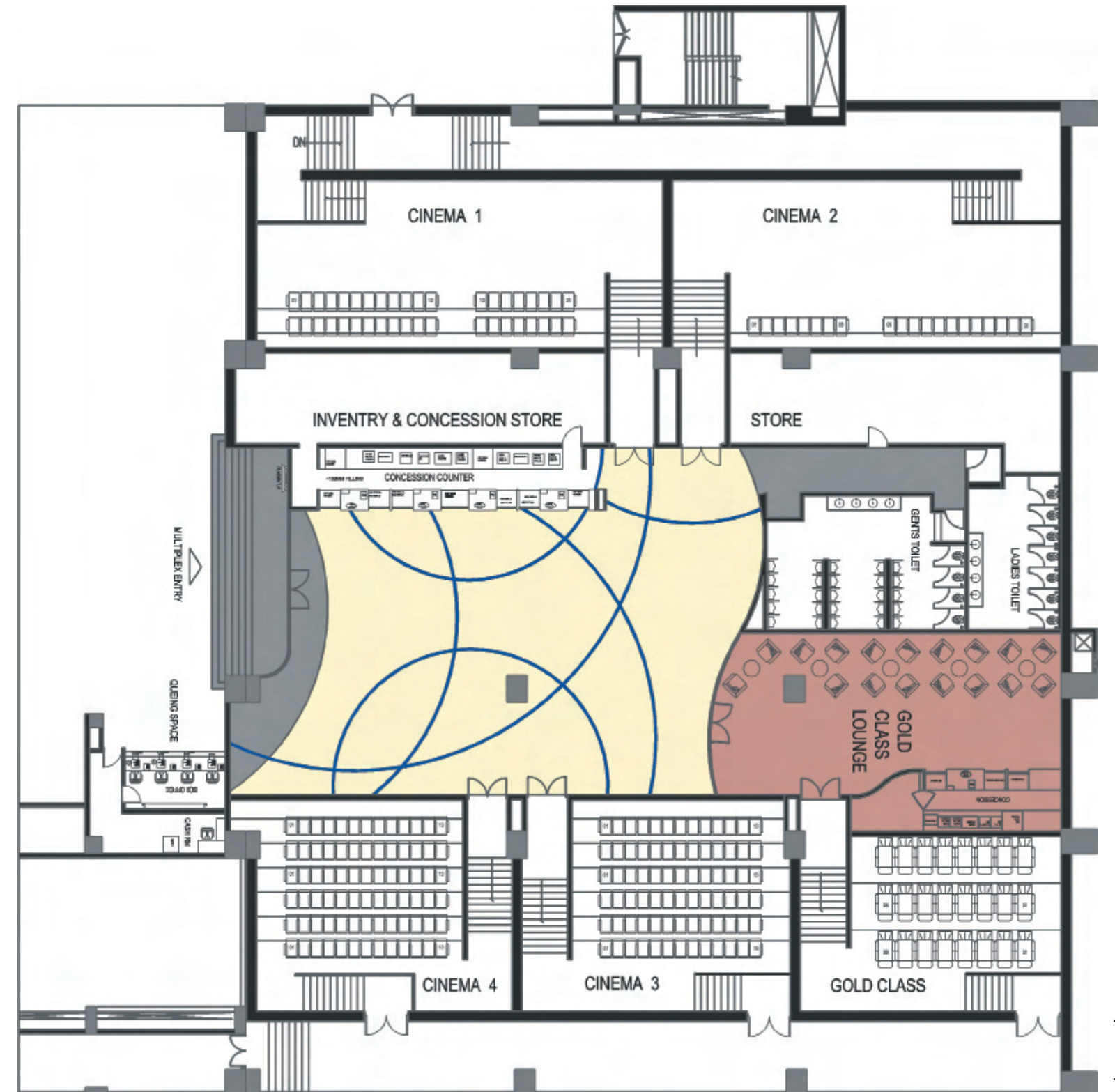
Lobby elevations

Exit level plan





The free flowing curves inlay pattern in flooring mimics sea waves, also guides the patrons to cinema entrances.



Lobby level plan 2